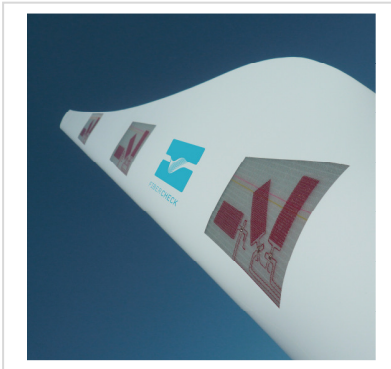


## FiberCheck



### Summary

The Fiber Check system is capable of detecting early structural changes in fiber reinforced composites and therefore prevents undesirable damages. This will not only cut costs of maintenance and repairs and minimize downtime, but also reduce the probability of total breakdowns, thereby ensuring profits. All information about the structural health and the operational state of the blades is available on line.

### Development stage, time to market

Technology: Design a MEMS Chip. Develop a prototype for the Fiber-Check Sensor system. Develop other applications for condition monitoring of composite materials

Time to market 12 months

### Market potential

Over 10.000 blades are technical interesting for the FiberCheck System

### IP

We have already 2 Patents for one Sensor, and two Patents are on the way. The FiberCheck System will be IP safe in the next 6 months. Also a few different applications will be patented in the next 12 months.

### Partnering sought

We have some potential customers in Germany. We are working closely with some research departments in Germany. We are looking for some customers and partners in other European countries and in the States.

### Contact Details

Tobias Meyhöfer  
Tobias.meyhoefer@wirtschaft.tu-chemnitz.de